



THREE MINUTES !

NEW HAVEN YACHT CLUB

RACE SCHEDULE

2022



DAY	DATE	START	RACE
Monday	May 30, 2022	1:30 PM	Hollingsworth Race
Sunday	June 19, 2022	1:30 PM	Spring Series No.1
Monday	July 4, 2022	1:30 PM	July 4 th Race
Sunday	July 17, 2022	1:30 PM	Spring Series No.2
Saturday	July 30, 2022	11:00 AM	Mayor's Cup Race
Sunday	July 31, 2022	1:30 PM	Summer Series No.1
Sunday	August 14, 2022	1:30 PM	Summer Series No.2
Sunday	August 28, 2022	1:30 PM	Fall Series No.1
Monday	September 5, 2022	1:30 PM	Ray Morgan Singlehanded Race
Sunday	September 11, 2022	1:30 PM	Fall Series No.2

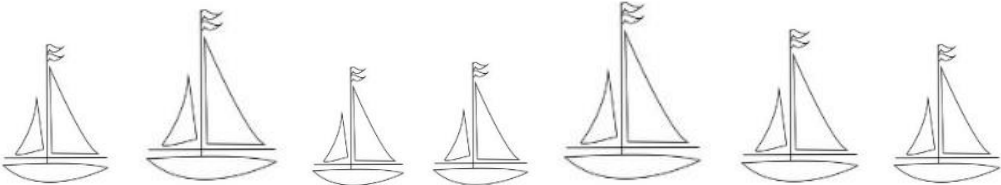
UPCOMING EVENTS:

1. Mast up - Saturday, May 14 at 1000.
2. Launch - Saturday, May 21 at 1400.
High tide is at 1643 with a 6.3 ft. height.

Thanks,
Carlo

Special photo pheature:



BILL POINTS HIS CAMERA AT THE FIRST SUNDAY WORK PARTY







New Haven, CT - Jun 2022

Date		High				Low						
		AM	ft	PM	ft	AM	ft	PM	ft	Rise	Set	Moon
1	Wed	12:56	6.7	1:31	6.0	7:22	0.2	7:27	1.0	5:19	8:19	☀
2	Thu	1:36	6.5	2:13	5.9	8:01	0.3	8:09	1.1	5:18	8:20	☀
3	Fri	2:18	6.3	2:55	5.9	8:43	0.5	8:53	1.2	5:18	8:21	☀
4	Sat	3:01	6.1	3:40	5.8	9:25	0.6	9:39	1.2	5:17	8:22	☀
5	Sun	3:47	6.0	4:26	5.8	10:10	0.7	10:29	1.3	5:17	8:22	☀
6	Mon	4:37	5.9	5:14	5.9	10:57	0.8	11:21	1.2	5:17	8:23	☀
7	Tue	5:29	5.8	6:03	6.0	11:46	0.8			5:17	8:24	☀
8	Wed	6:23	5.8	6:53	6.3	12:16	1.0	12:36	0.8	5:16	8:24	☀
9	Thu	7:18	5.8	7:43	6.6	1:11	0.8	1:26	0.7	5:16	8:25	☀
10	Fri	8:13	5.9	8:33	6.9	2:06	0.5	2:17	0.6	5:16	8:25	☀
11	Sat	9:07	6.1	9:23	7.3	2:59	0.1	3:08	0.5	5:16	8:26	☀
12	Sun	10:00	6.3	10:14	7.5	3:52	-0.2	3:59	0.3	5:16	8:26	☀
13	Mon	10:53	6.4	11:06	7.7	4:45	-0.5	4:52	0.2	5:16	8:27	☀
14	Tue	11:46	6.5	11:59	7.8	5:37	-0.7	5:45	0.1	5:16	8:27	☀
15	Wed			12:39	6.6	6:29	-0.7	6:40	0.1	5:16	8:28	☀
16	Thu	12:53	7.7	1:32	6.7	7:22	-0.7	7:36	0.1	5:16	8:28	☀
17	Fri	1:49	7.5	2:28	6.7	8:17	-0.5	8:34	0.2	5:16	8:28	☀
18	Sat	2:46	7.2	3:24	6.6	9:12	-0.3	9:34	0.3	5:16	8:29	☀
19	Sun	3:44	6.9	4:22	6.6	10:08	0.0	10:36	0.5	5:16	8:29	☀
20	Mon	4:44	6.5	5:21	6.6	11:04	0.2	11:39	0.6	5:16	8:29	☀
21	Tue	5:46	6.2	6:19	6.6			12:00	0.4	5:17	8:29	☀
22	Wed	6:46	5.9	7:15	6.7	12:42	0.6	12:56	0.6	5:17	8:30	☀
23	Thu	7:45	5.8	8:08	6.7	1:41	0.5	1:50	0.8	5:17	8:30	☀
24	Fri	8:41	5.7	8:58	6.8	2:37	0.4	2:41	0.9	5:17	8:30	☀
25	Sat	9:33	5.7	9:45	6.8	3:28	0.3	3:30	1.0	5:18	8:30	☀
26	Sun	10:20	5.8	10:30	6.8	4:15	0.2	4:16	1.0	5:18	8:30	☀
27	Mon	11:05	5.9	11:13	6.7	4:59	0.2	5:00	1.0	5:19	8:30	☀
28	Tue	11:47	5.9	11:54	6.7	5:40	0.2	5:43	1.0	5:19	8:30	☀
29	Wed			12:28	6.0	6:19	0.2	6:24	1.0	5:19	8:30	☀
30	Thu	12:35	6.6	1:08	6.0	6:58	0.3	7:05	1.0	5:20	8:30	☀



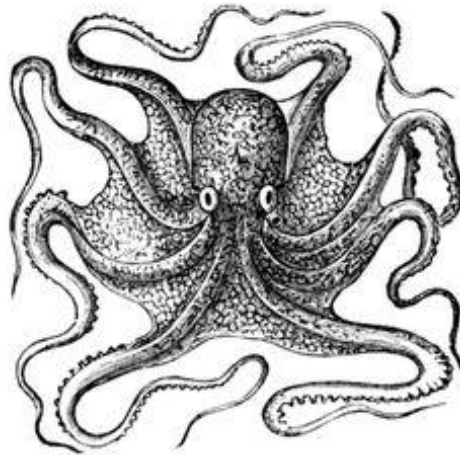
THIS MONTH'S LINK:

A Four-Masted Barque Sails Around Cape Horn in 1929

This month's video is historic. A steel barque carrying 5300 tons of cargo heads for the Pacific. Irving Johnson was onboard. Fifty-one years later, he provided commentary. And you think you've got it rough!

<https://youtu.be/9tuTKhqWZso>

The *Peking* has been restored and is now a star attraction at the maritime museum in Hamburg.



MEMBER INTRODUCTIONS

If you are interested in sharing a story with other club members in a future issue, please send it to Bob. The content and focus of the story are up to you. Submissions should be limited to 500 words. The author will be able to review and accept edits before publication.

UNSUBSCRIBE REQUEST

If you wish to unsubscribe from this publication, please contact Bob.